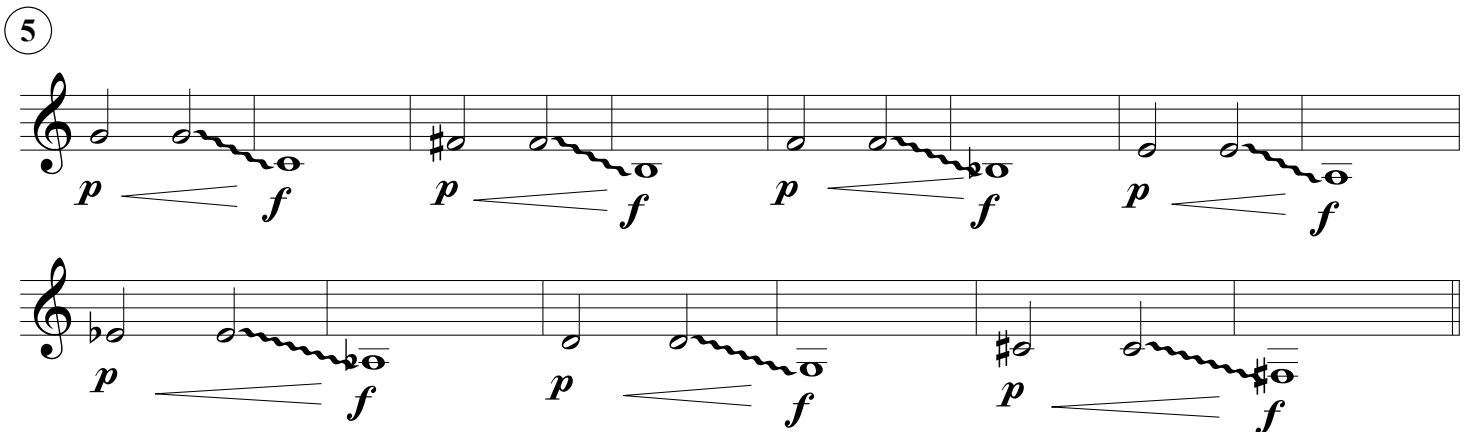
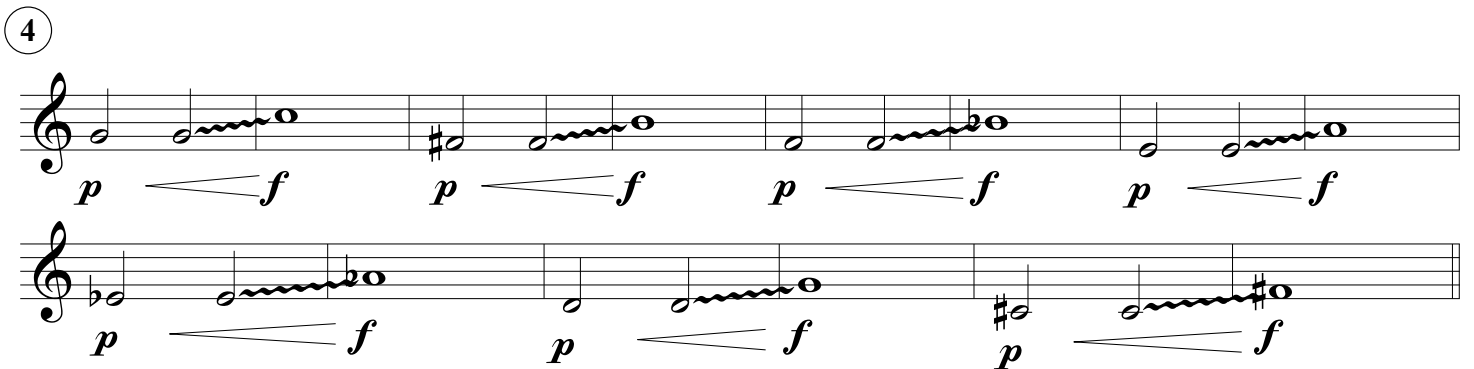
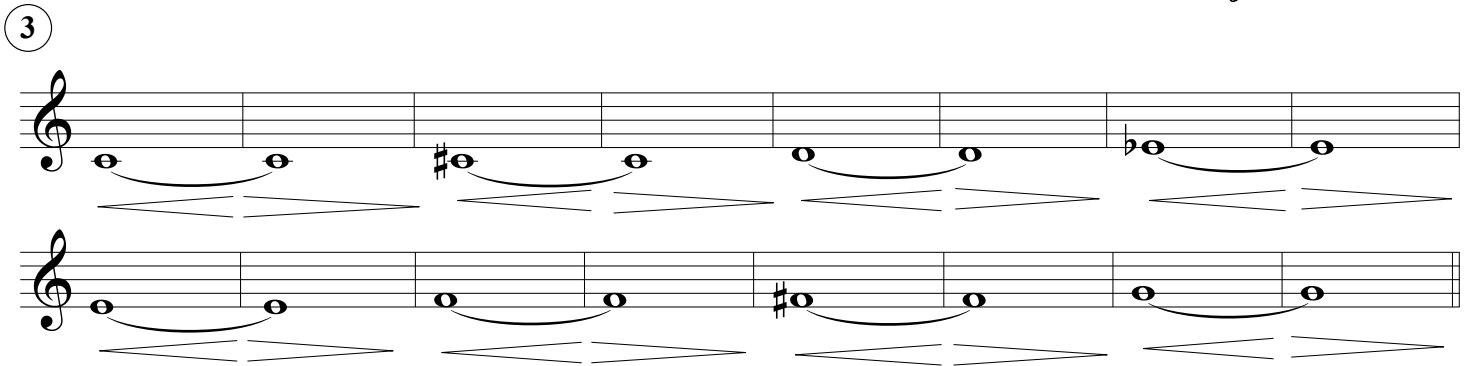
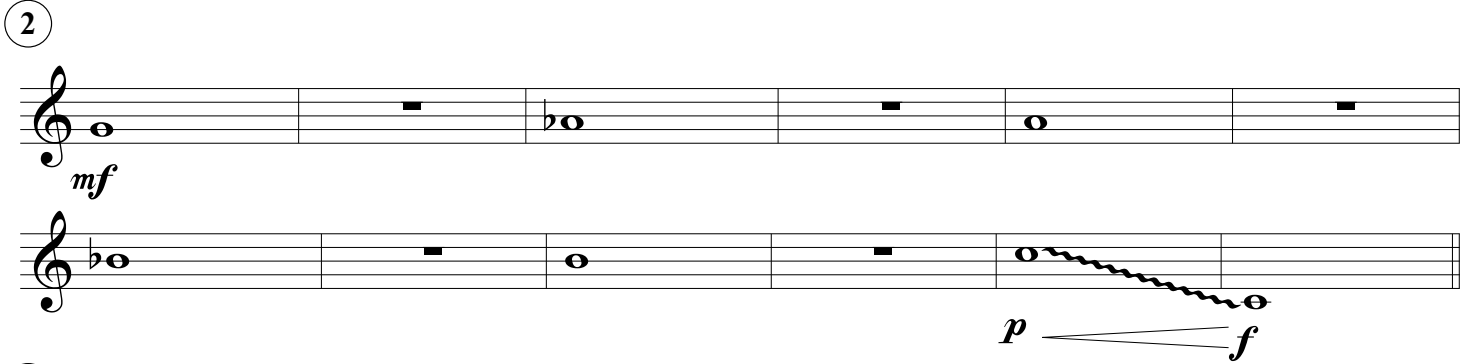


Trumpet in B $\flat$

# Mouthpiece Buzzing

Buzz with mouthpiece or play with full instrument.  
When buzzing with the mouthpiece use a pitch reference  
such as a piano or the instrument.

① 1 Minute of Buzzing (Breathe only when necessary)



**6 Lip Bends (Play with the full instrument)**

The first staff of music is written on a treble clef staff. It consists of three measures. The first measure contains four quarter notes: G4, A4, B4, and C5, with a sharp sign above the A4 note. Below this measure is the text "Use Valves". The second measure contains a quarter note G4, followed by a wavy line representing a lip bend, and ends with a whole note G4. Below this measure is the text "Lip Bend (No valves)". The third measure contains a quarter note G4, followed by a wavy line, and ends with a whole note G4. Below this measure is the text "Repeat the process".

The second staff of music is written on a treble clef staff. It consists of four measures. The first measure contains four quarter notes: G4, A4, B4, and C5. The second measure contains a quarter note G4, followed by a wavy line, and ends with a whole note G4. The third measure contains four quarter notes: G4, A4, B4, and C5, with a sharp sign above the A4 note. The fourth measure contains a quarter note G4, followed by a wavy line, and ends with a whole note G4.

The third staff of music is written on a treble clef staff. It consists of four measures. The first measure contains four quarter notes: G4, A4, B4, and C5. The second measure contains a quarter note G4, followed by a wavy line, and ends with a whole note G4. The third measure contains four quarter notes: G4, A4, B4, and C5, with a sharp sign above the A4 note. The fourth measure contains a quarter note G4, followed by a wavy line, and ends with a whole note G4.